

The logo for ACT (Autoridade para as Condições do Trabalho) features the letters 'ACT' in a bold, white, sans-serif font. The 'A' is stylized with a triangular cutout at the top. The 'C' and 'T' are solid. The logo is set against a white background that is part of a larger graphic element consisting of a white L-shaped bar.

AUTORIDADE PARA AS
CONDIÇÕES DO TRABALHO

The Portuguese Labour Inspectorate

Transnational Mobility of Workers
and Companies Working Group



REPÚBLICA
PORTUGUESA
TRABALHO, SOLIDARIEDADE
E SEGURANÇA SOCIAL



2021
PORTUGAL.EU

5 february 2021

Some data about our country



- **Total area: 92.212.02 km²**
- **Population: 10.286,3 (2019)**
- **Active population: 6.621.663 (2019)**
- **Enterprises** – 95% have less than 10 workeres
- **Unemployment rate**– 7,9% (2020)

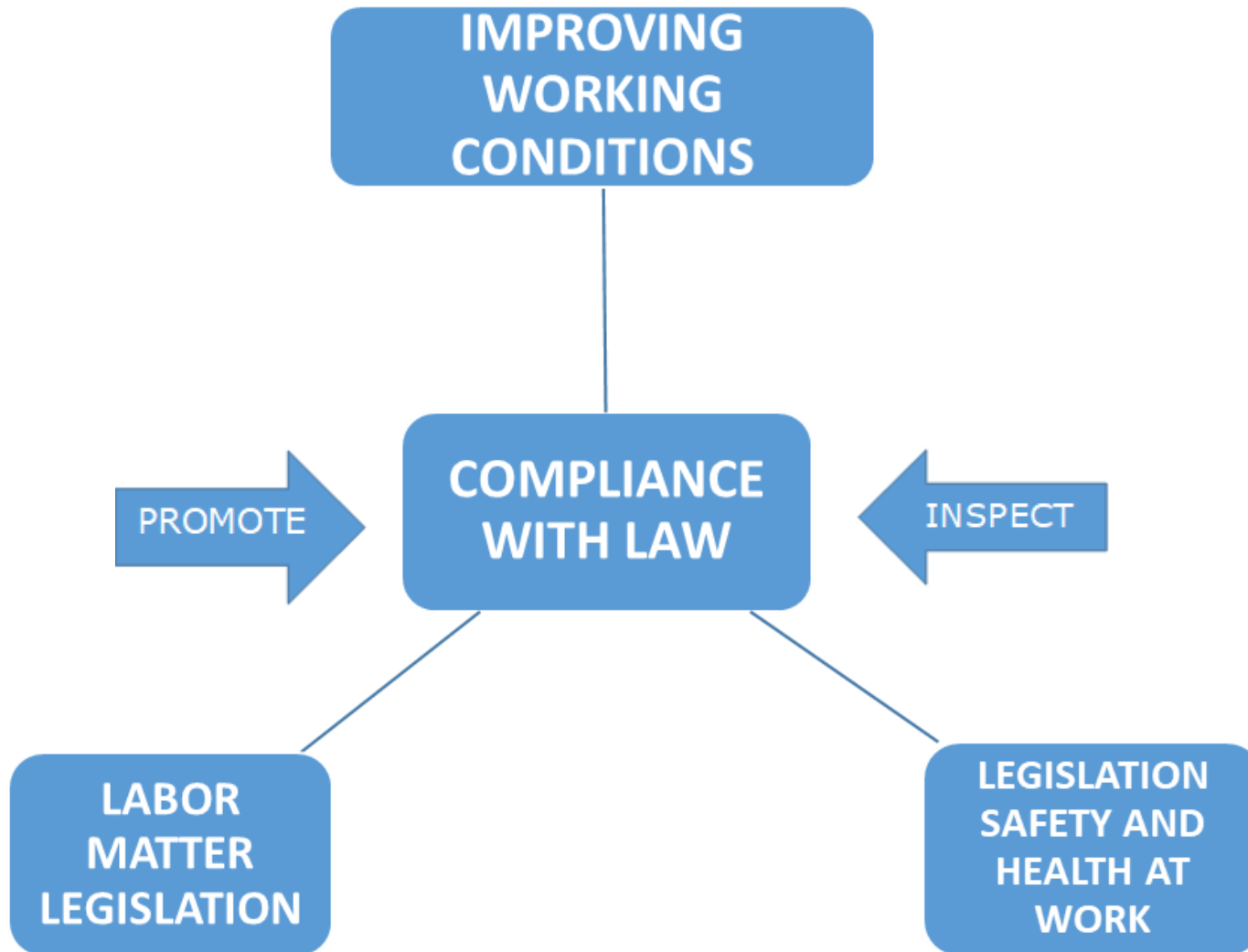
Authority for working conditions



MISSION

- Promotion of the **improvement of working conditions**, through the monitoring of compliance of labor standards and monitoring compliance of occupational health and safety legislation
- Promotion of **policies to prevent occupational risks** in the field of private sector labor relations

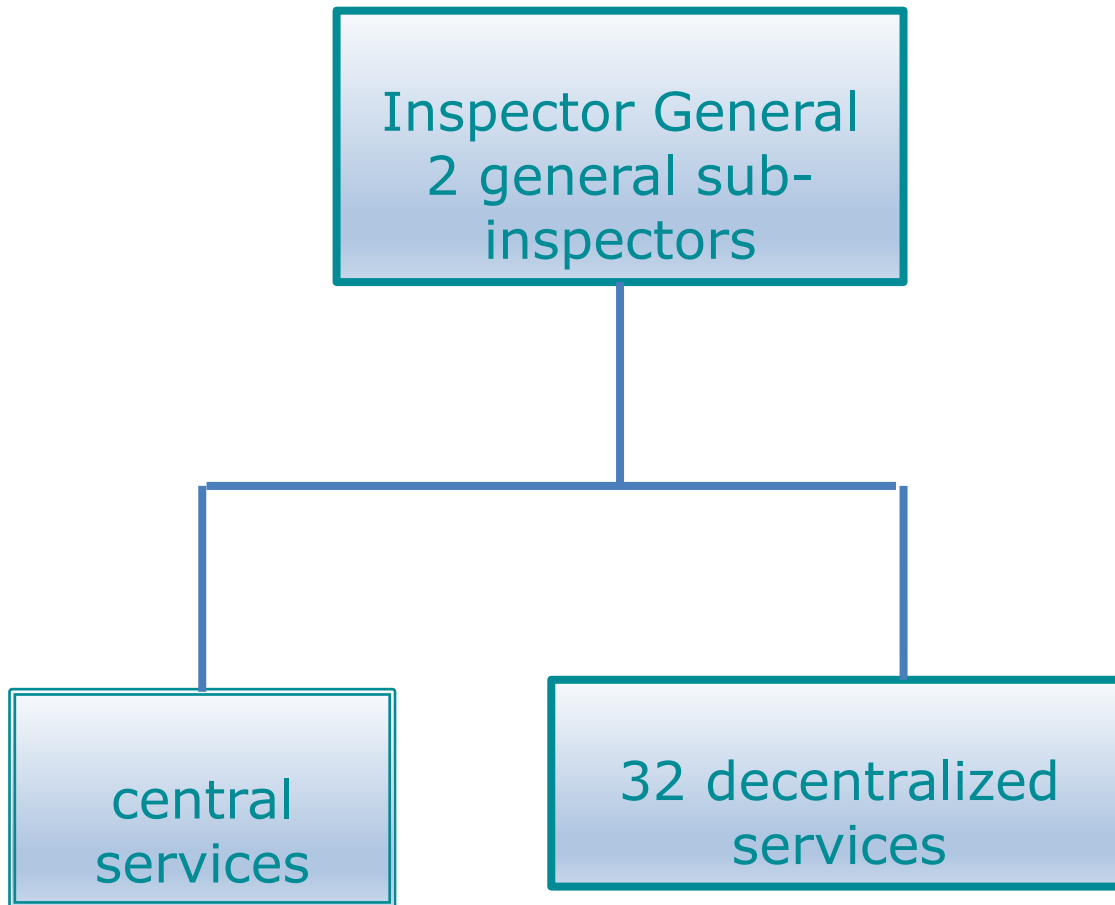
MISSION: HOW TO DO



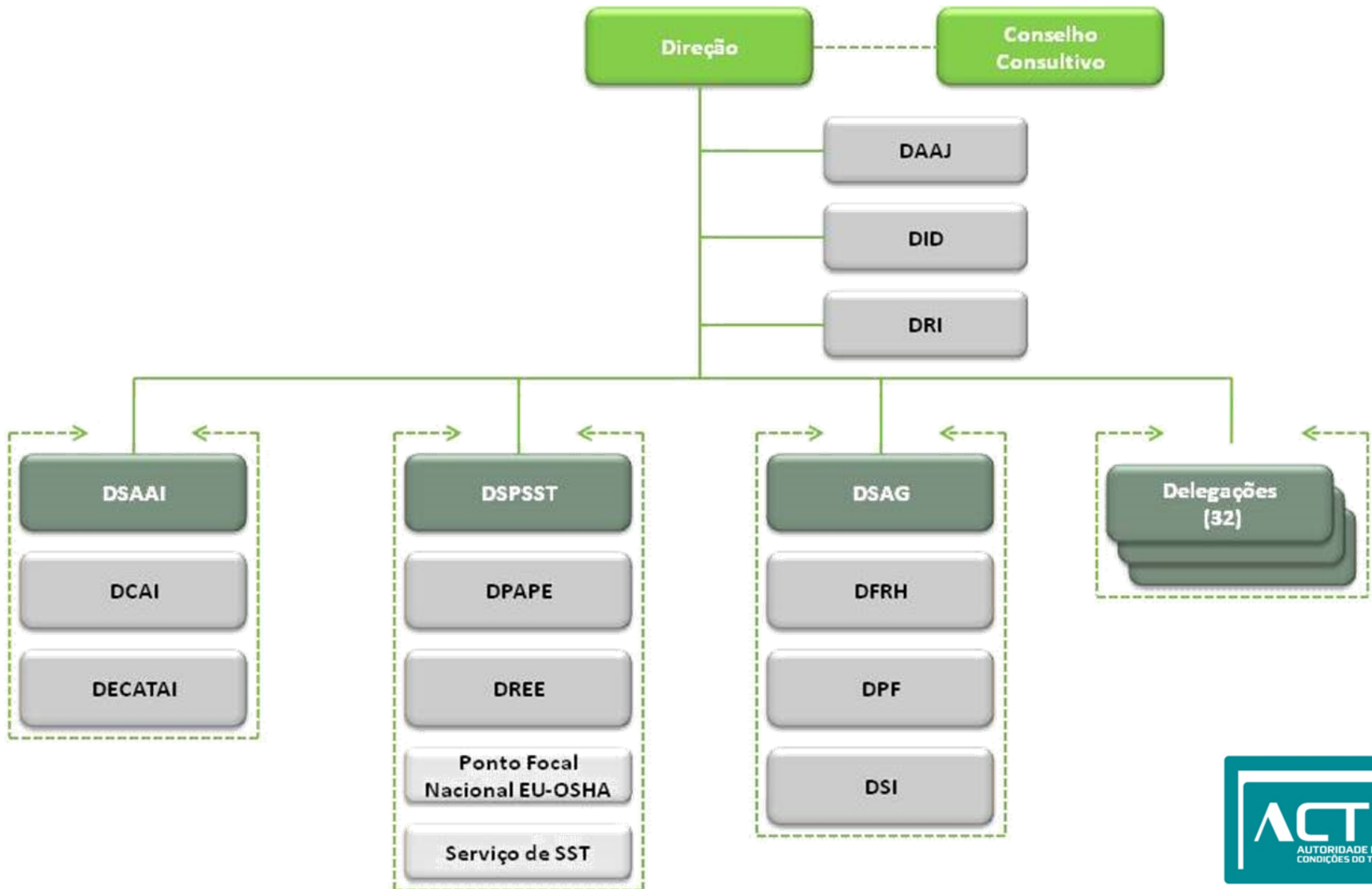
WHO WE ARE, WHAT WE DO

- Is a state central authority
- Is part of the direct administration of state under the Ministry of Labour, Solidarity and Social Security
- It is generalist:
 - in private sectors: labour relations and Occupational Safety and Health (OSH)
 - in public sector: Occupational Safety and Health (OSH)
- Jurisdiction over the whole mainland territory
- It is geographically divided in 32 local branches
- Head Office in Lisbon

ORGANIZATION



STRUCTURE

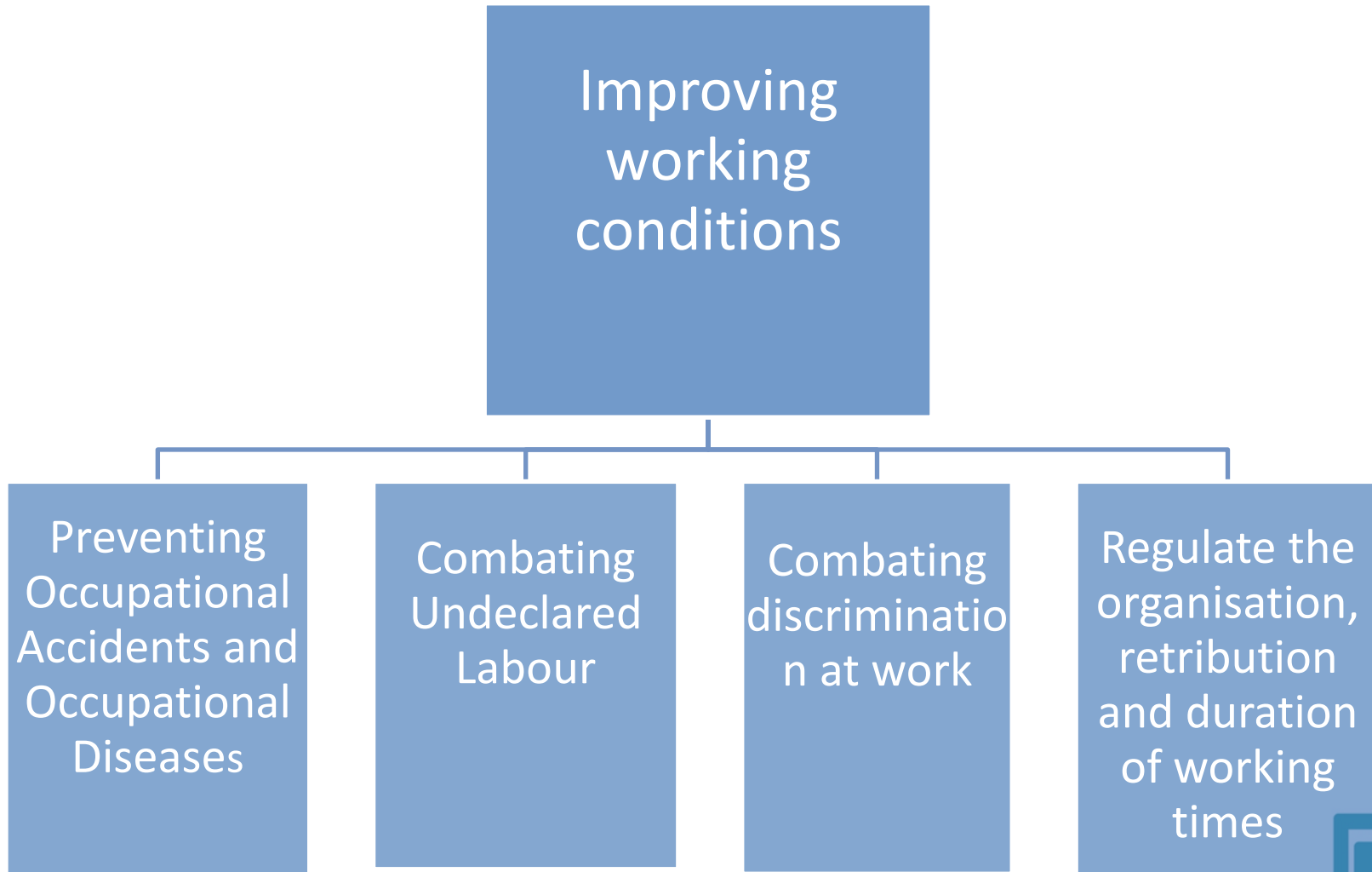


HUMAN RESSOURCES

Carreira	Number of workers personal map 2019
Dirigentes	44
Inspetor	443(*)
Técnico Superior	283
Informática	21
Assistente Técnico	206
Assistente Operacional	32
TOTAL	1026

(*) 80 are finishing their internship

Strategic objectives



HOW?



Regulate working conditions
Prevention and control



Appeal self-regulation

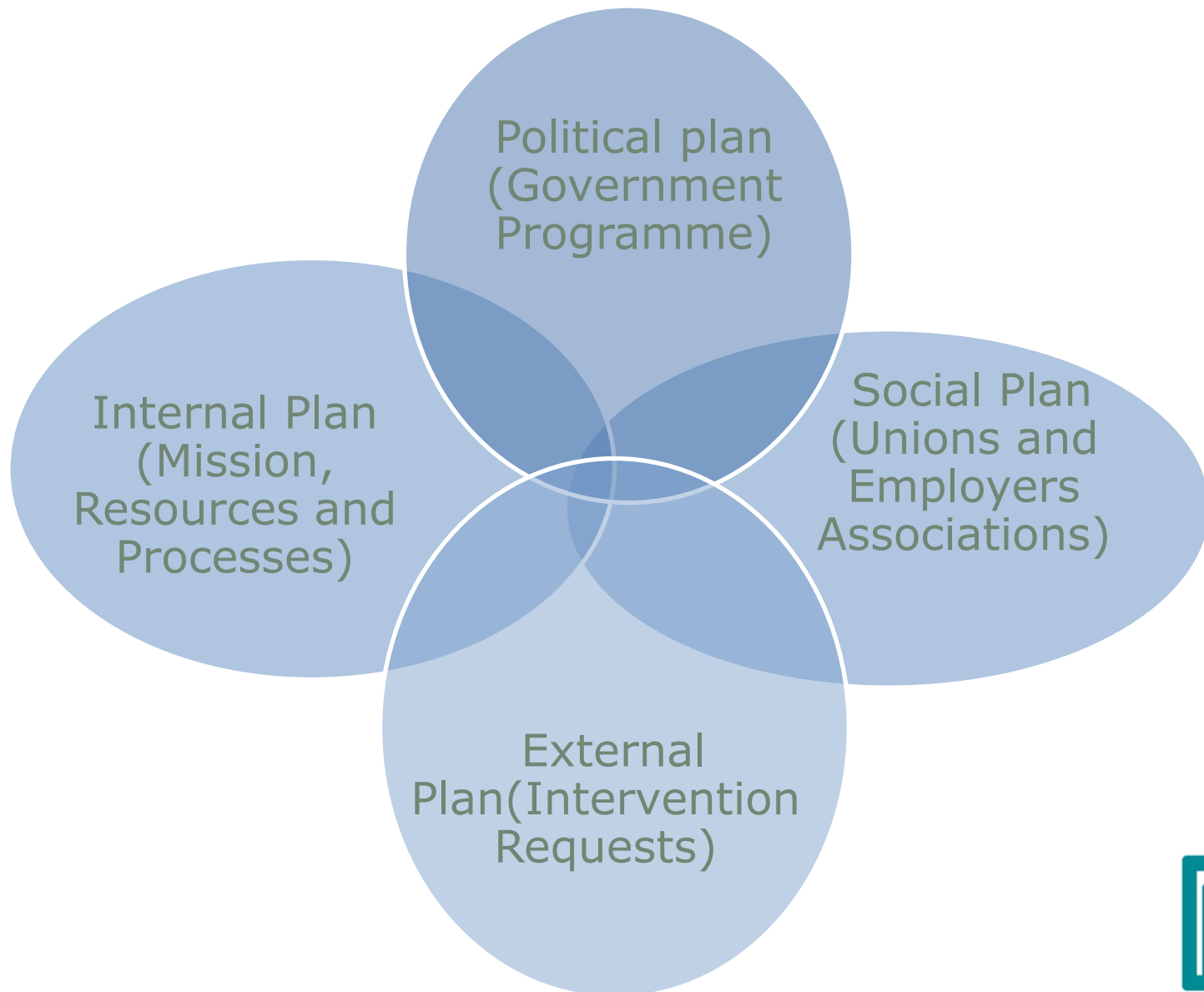
Inform / Advise

promoting the health and safety system at work

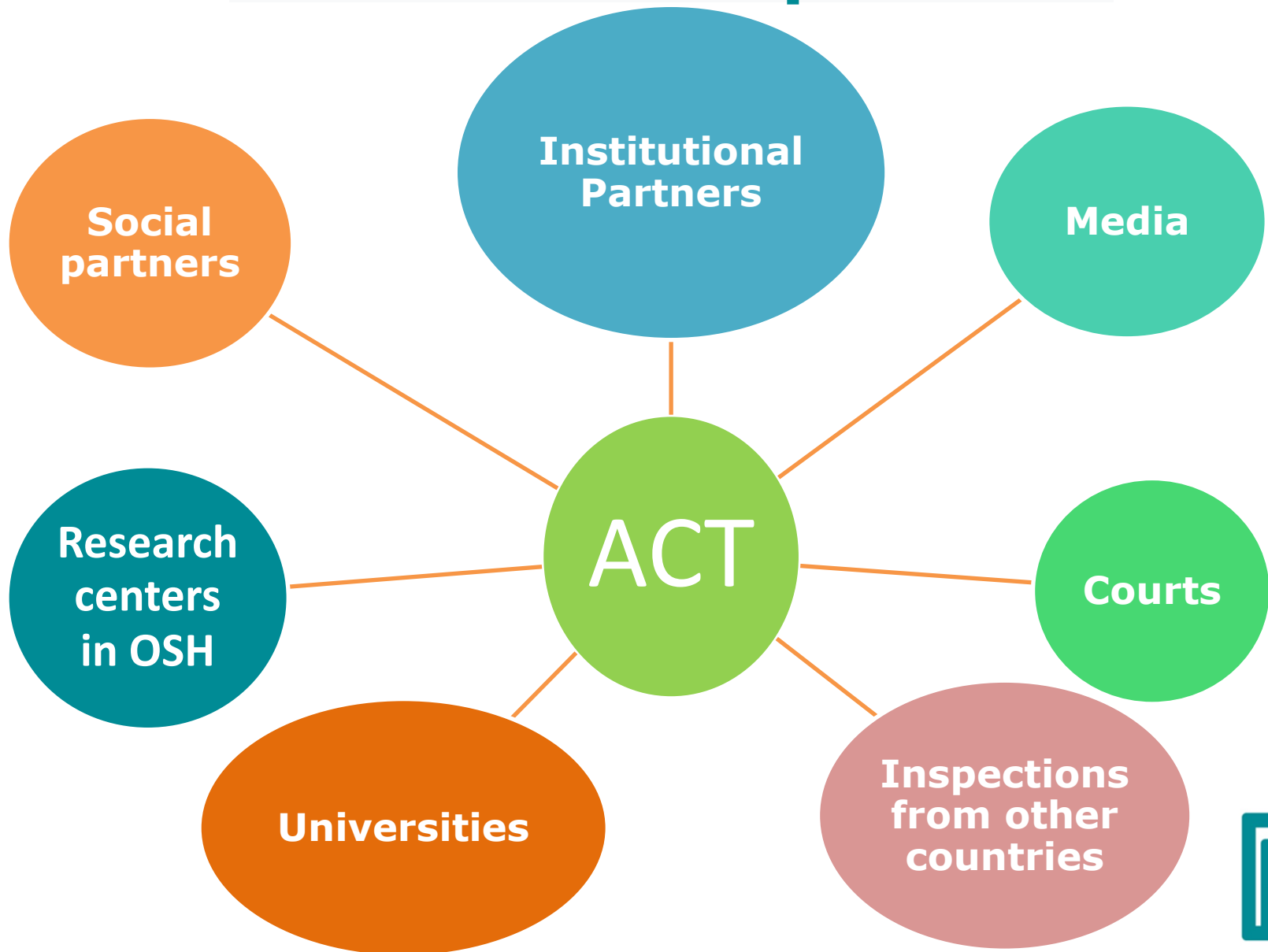


CAMPANHA
PREVENÇÃO DE RISCOS PROFISSIONAIS EM MÁQUINAS E EQUIPAMENTOS DE TRABALHO

Strategic planning process



ACT and main partners



PROVIDING INFORMATION

ATENDIMENTO INFORMATIVO TELEFÓNICO

Dias úteis das 9h30 às 12h00 e das 14h00 às 17h00

300 069 300

[O valor da chamada corresponde ao valor de uma chamada para a rede fixa, em função do seu plano tarifário]

OU

Ligue-nos

[Gratuitamente, através do botão **ligue-nos** disponível na página inicial do portal da ACT]

Telephone line to give information's, written information's personally in the local branches, during inspective visits, in workshops, in seminars, in mass media

WEB SITE



Information materials in our website: faqs, legislation, check-lists, mandatory forms

POSTING WORKERS



[https://www.act.gov.pt/\(pt-PT\)/CentroInformacao/DestacamentoTrabalhadores/Paginas/default.aspx](https://www.act.gov.pt/(pt-PT)/CentroInformacao/DestacamentoTrabalhadores/Paginas/default.aspx)