

The Norwegian Labour Inspection Authority

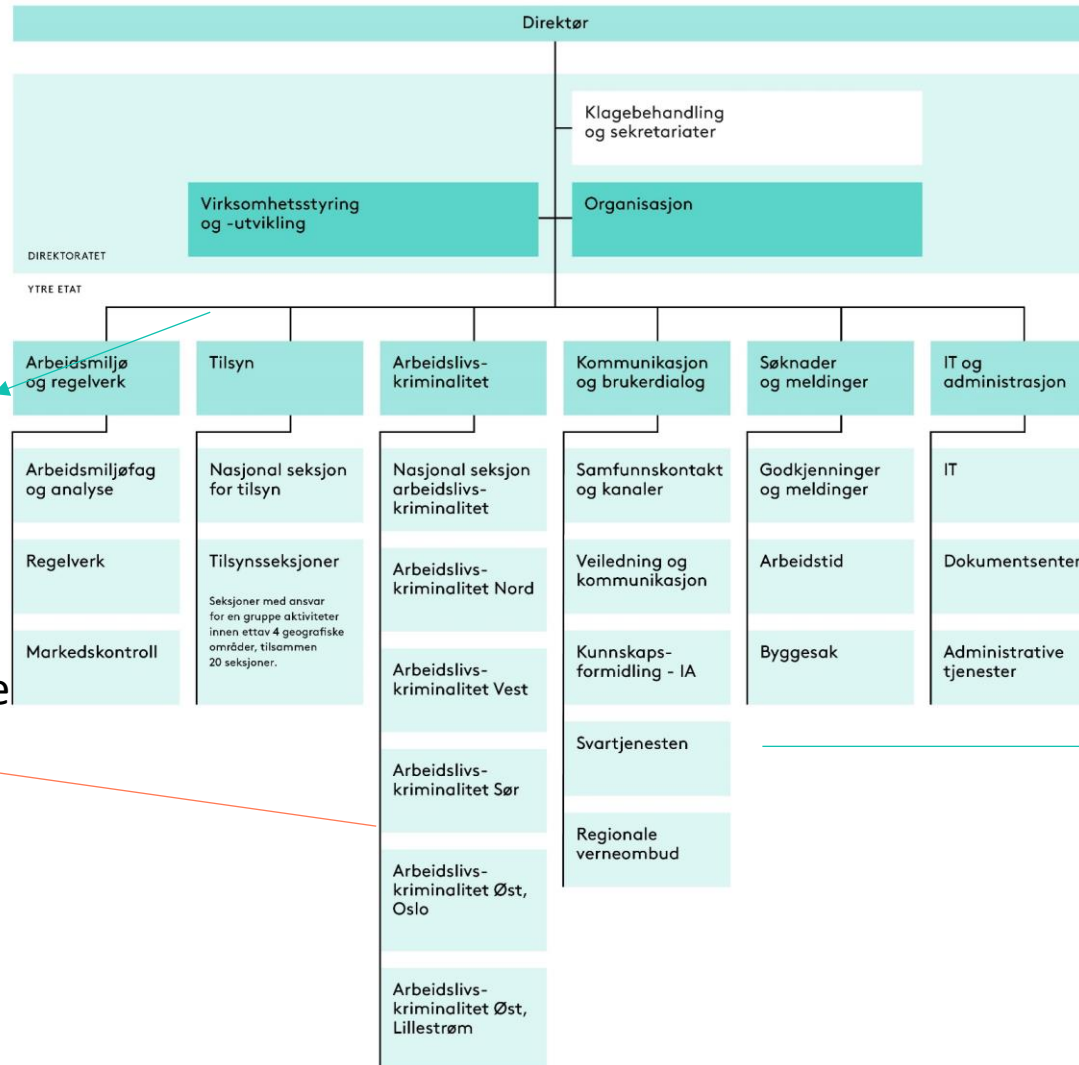
- Posting of workers



Organization

The Norwegian Labour inspection is divided into to main divisions for inspections.

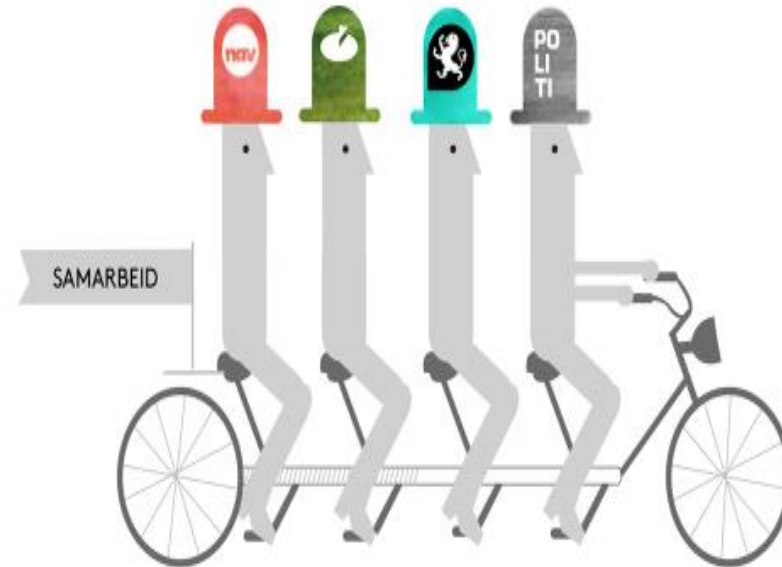
1. The main sections has a a preventive focus.
2. The second is establish to combate workplace crime.



3. The Norwegian Labour Inspection Authority's queries service – answers questions about working environment issues, occupational health and safety. And also the general IMI requests.

Posted workers

- The main task of work related to posted workers has been delegated to the work-related crime section.
- Several offices have been established in which the units are represented and in all geographic areas we cooperate.
- The main units that cooperate are:
 - The Norwegian Labour and Welfare Administration (NAV)
 - the Police,
 - The Norwegian Tax Administration
 - and The Labour Inspection Authority.



Posted workers

- When selecting companies for inspection the cooperating teams share information and determine where we should do inspections.
- The possibility of posted workers is part of the selection criteria.
- Norway do not have a registration system for posted workers and therefore we do not often know where or if there are posted workers.



Thank you for your attention

